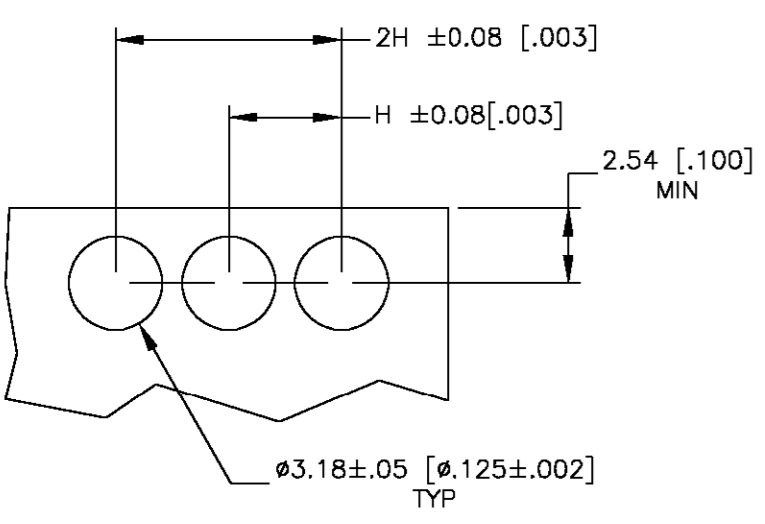
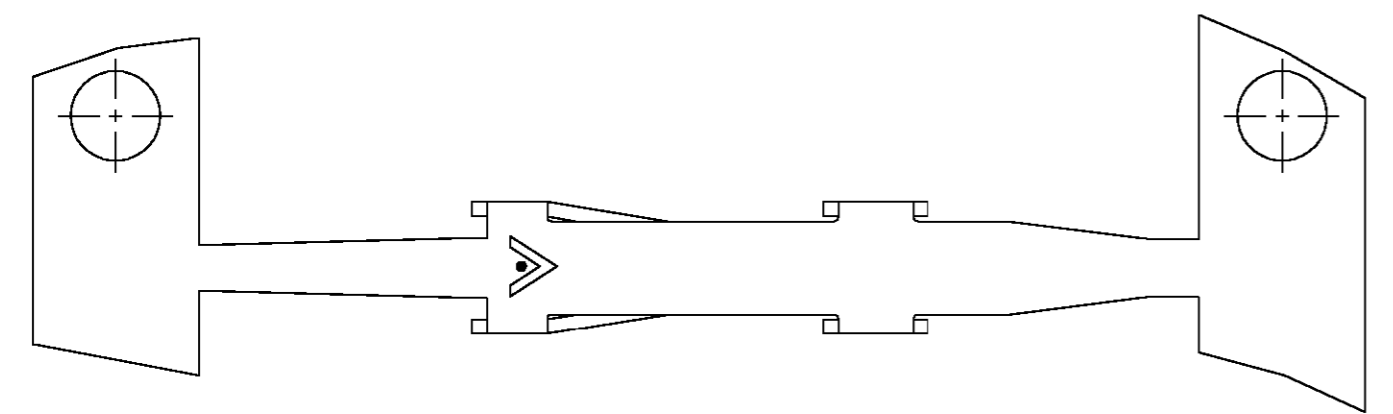
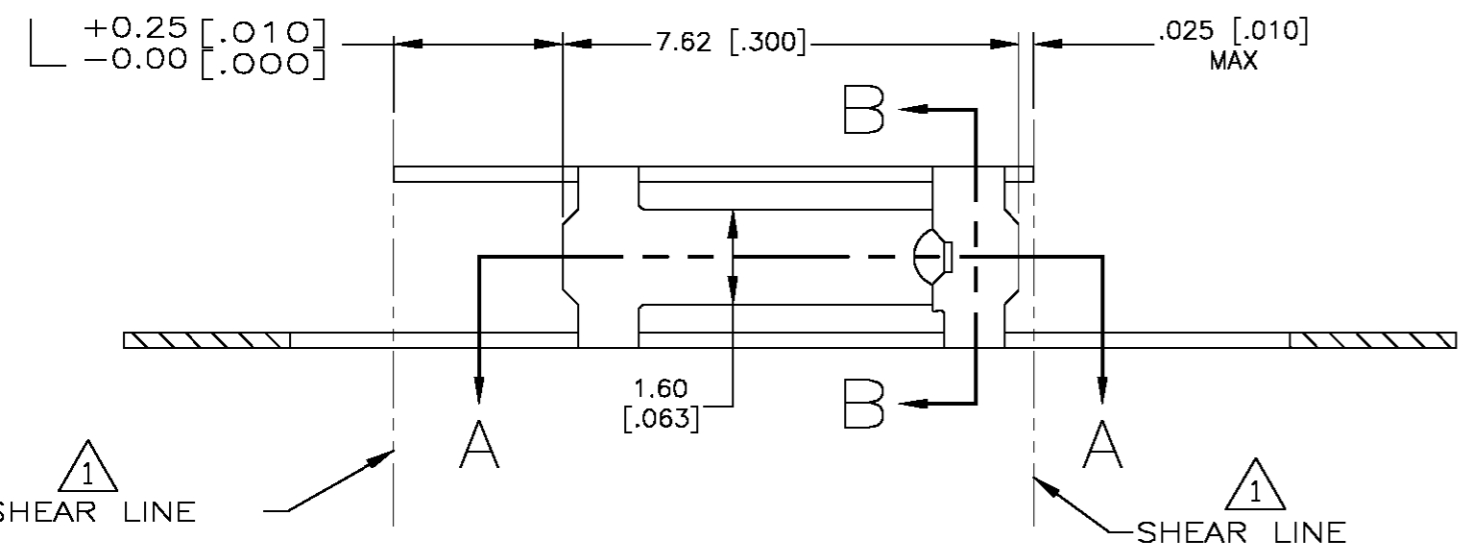
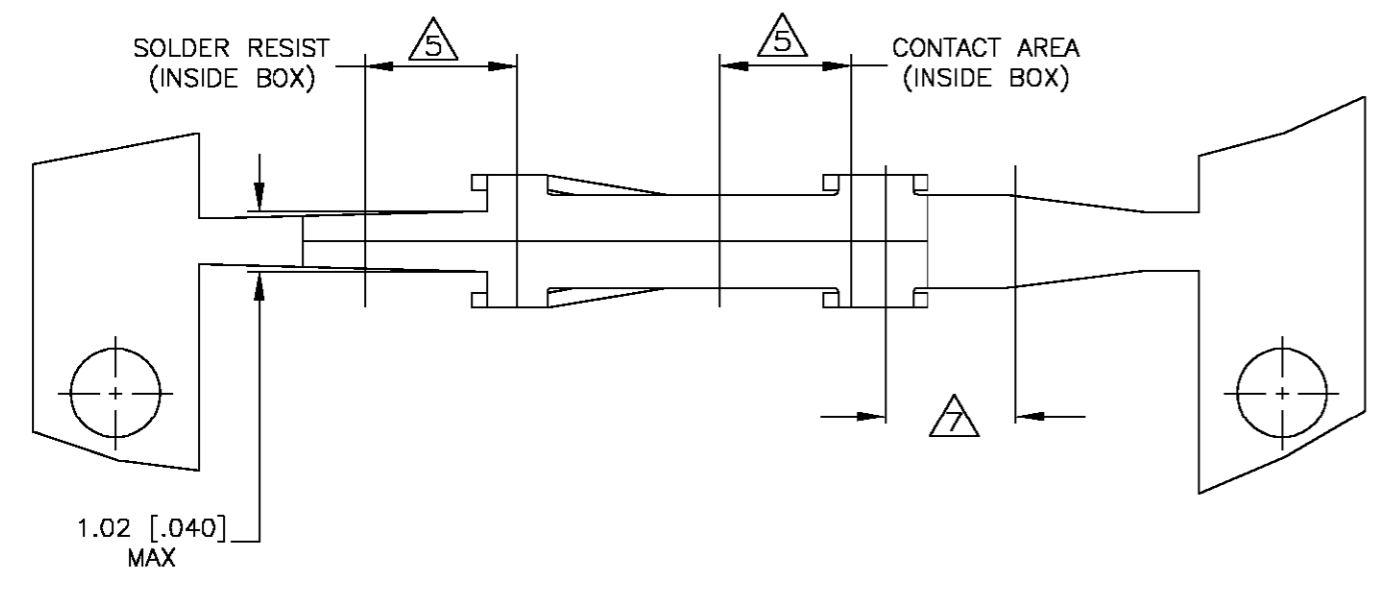
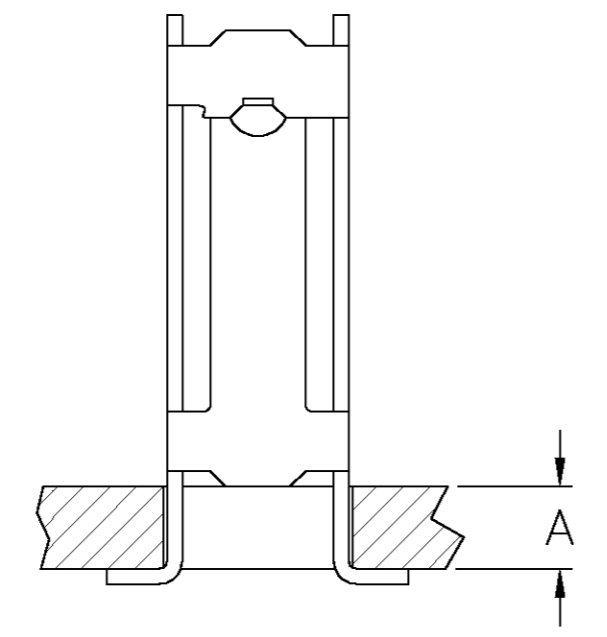


LOC		DIST		REVISIONS			
P	LTR	DESCRIPTION	DATE	DWN	APVD		
AD	00	L	REV PER 0G3C-0057-01	-	MB	MZ	

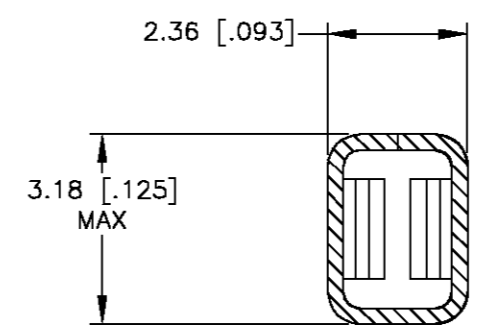


RECOMMENDED P.C. BOARD LAYOUT

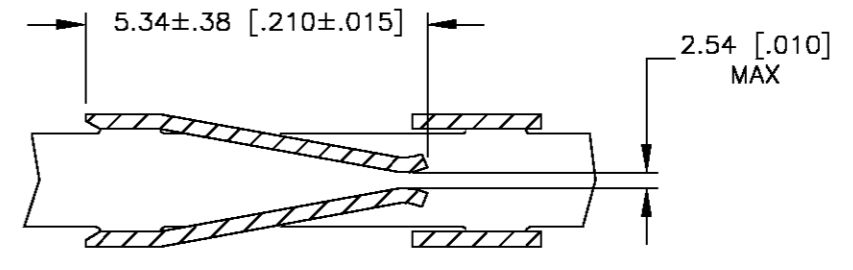


TYPICAL APPLICATION

- 1 SHEAR LINES DEFINE LOOSE PIECE PART.
- 2. FOR USE WITH AMPMODU MINIATURE APPLICATOR.
- 3 CONTACT MAT'L: COPPER-NICKEL-TIN ALLOY 725.
- 4 "H", (RECEPTACLE CENTERS) MAY VARY DEPENDING ON REQUIREMENTS, MINIMUM NOMINAL CENTER SPACING BETWEEN ADJACENT RECEPTACLES IS  $3.8 \pm 0.08 [0.150 \pm 0.003]$ .
- 5 FINISH  $0.00076 [0.000030]$  MIN W.E. #1 ALLOY OVER  $0.00127 [0.000050]$  MIN NICKEL INLAID INTO CONTACT AREA,  $0.01270 [0.000500]$  MIN ALUMINUM INLAID INTO SELECT AREA OF SOLDER TINE, REMAINDER UNFINISHED.
- 6. A MILDLY ACTIVATED FLUX IS REQUIRED TO SOLDER.
- 7 IF ALTN STOCK IS USED SOLDER RESIST WILL APPEAR IN THIS AREA ALSO.
- 8 OBSOLETE.



SECTION B-B



SECTION A-A

COMP-U-SERTOR	1.40/1.78 [.055/.070]	3	5	2.84 [.112]	-	87772-3
MINIATURE	1.40/1.78 [.055/.070]	3	5	2.84 [.112]	87776-2	87772-2
OBSOLETE MINIATURE	1.40/2.62 [.055/.103]	3	5	3.68 [.145]	87776-1	87772-1
REELED FOR APPLICATOR	A	MATL 7	FINISH	TINE LGTH	LOOSE PIECE PART NO.	PART NUMBER

THIS DRAWING IS A CONTROLLED DOCUMENT.		DWN E. BRANDBERG 7-14-94	Tyco Electronics Corporation Harrisburg, PA 17105	
DIMENSIONS: INCHES		CHK J. HERRINGTON 7-14-94	NAME <b>AMP</b>	
TOLERANCES UNLESS OTHERWISE SPECIFIED:		APVD	PRODUCT SPEC	
0 PLC ± -		APPLICATION SPEC		
1 PLC ± -		WEIGHT		
2 PLC ± -		SIZE		
3 PLC ± 0.13 [.005]		CAGE CODE		
4 PLC ± -		DRAWING NO		
ANGLES ± -		RESTRICTED TO		
MATERIAL SEE TABLE	FINISH SEE TABLE	A2 00779		87772
CUSTOMER DRAWING		SCALE 8:1		SHEET 1 OF 1